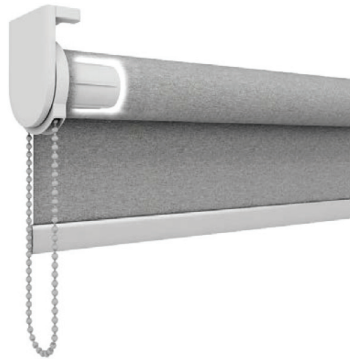




ASSIMAKOPOULOS

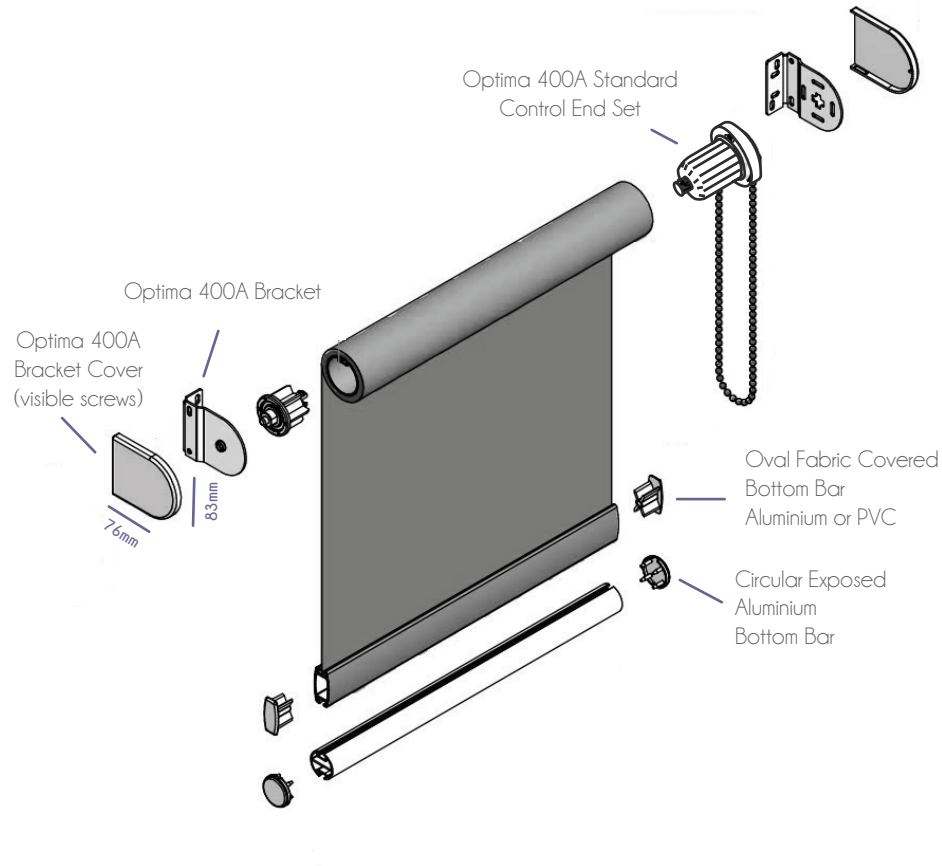
Roller Blind System

Optima 400A



OPTIMA
performance shades

System Types Optima Optima 400A



Technical Specifications Optima 400A

Advantages

400A

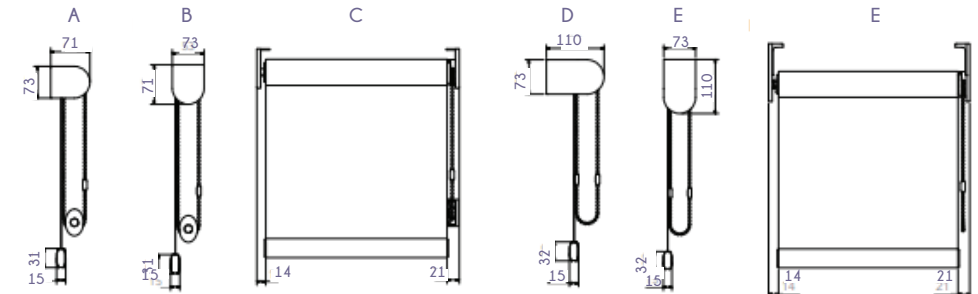
- Designed and manufactured in Greece.
- 3,65 kg maximum holding weight.
- Shared brackets and a spring terminal allow for easy and quick installation.

Components Material

400A

- The side control units, manufactured in Greece from special plastics Pro-myde B30 P, DelDe7057 NC 010 and MR 80 U (High Density Polyethylene).
- The supports are made of DKP steel sheet and are electrostatically painted.

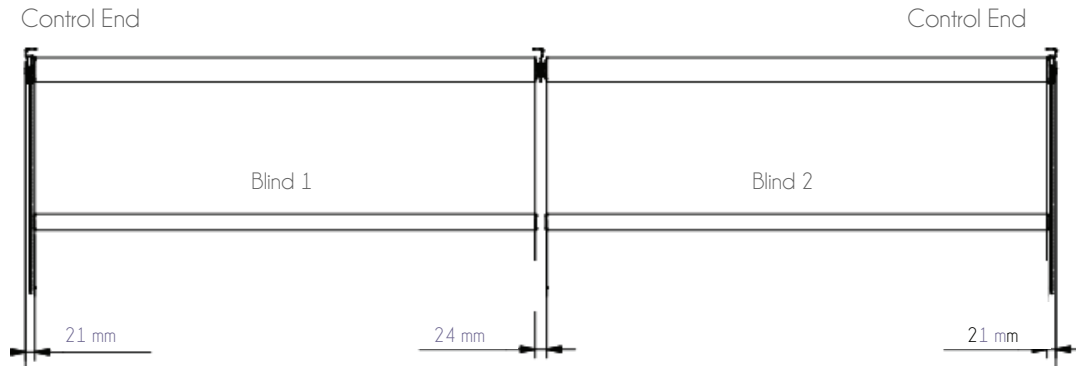
Small light gaps



Planning Information Optima 400A

Intermediate options

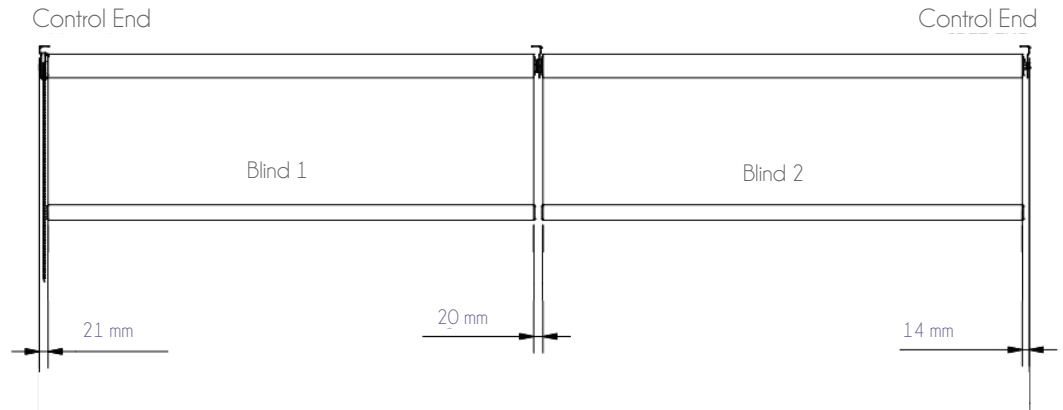
(independent or simultaneous function of the connected rollers)



Independent function (Freelink)



Planning Information Optima 400A

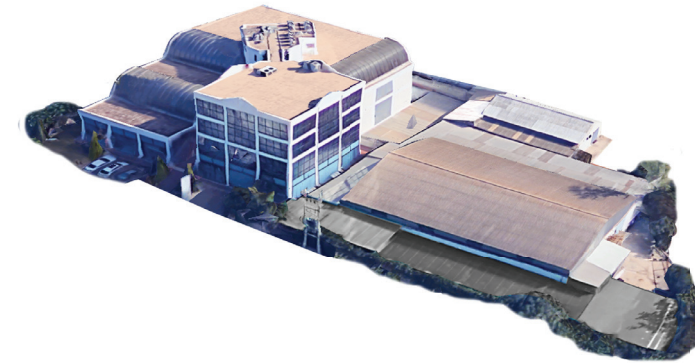


Simultaneous function (Drivelink)



Planning Information Optima 400A

Maximum Dimensions (Quick reference only, depending on type of fabric)			
Maximum Width (m)	Maximum Height (m)	Maximum Surface (m ²)	Fabric
2,8	3,5	7,14	Plain
2,6	3,4	6,42	Blackout
2,5	3,4	6,30	Screen



Company Profile

Optima blinds are supplied exclusively by N. Assimakopoulos SA being the largest manufacturing company in natural light control system applications while exceeding 50 years of specialization and involving staff/partners of 40 people.

In privately owned facilities of 5,000 sq.m. in Elliniko the company sells its products with vertical organization that optimizes cost, quality and delivery time through:

- Import or domestic production of A & B materials.
- Processing and assembly using hydraulic/pneumatic forming machines for cutting/drilling aluminum sheets or profiles, laser/ultrasonic plotters and machine tools of own machine shop down to finished, aesthetically and functionally tested final systems.
- Study and project management by specialized engineers/designers and implementers of proven know-how who offer long lasting reliable solutions to special requirements.
- Installation by specialized crews trained and supervised by engineers with over 25 years of experience in the organization of construction sites and technical applications.
- After-sales support (maintenance, repair, spare parts).
- ISO 9001/14001 certified customer-order/environmental management procedures respectively.

Head Office - Factory:
2 Rizountos Str. & Thrakis Str. 16777,
Elliniko, Athens GR
(+30) 210 9600 960
(fax) 210 9607 429
info@assimakopoulos.gr

Optima Elements Voula:
58 Vouliagmenis Ave.,
16673, Greece
210 9680539,
210 9680739
voula@optimaelements.gr

Optima Elements Marousi:
Marousi - 139 Kifisias Ave.
& Marathonodromou,
15124, Greece
210 8054190, 210 8054580
marousi@optimaelements.gr