



ASSIMAKOPOULOS

Roller Blind System

Optima 420



OPTIMA
performance shades

System Types Optima 420

Standard Brackets
(420 A)



Bracket & Profile
for quick and safe installation



Options

Open Cassette
(420 SEMI-CAS)



Round Closed Cassette
(CAS420 ROUND)



Square Cassette
(CAS420 SQUARE)



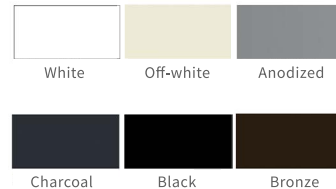
2 rollers in one bracket
[blackout and transparent
(420 Twin Roller)]



Bracket colors



Cassette Colors

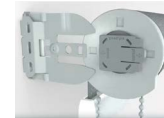


Technical Specifications Optima 420

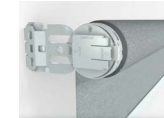
Advantages

- Modular construction: upgrade from basic to fully equipped using minimum additional components
- Wide variety of finishes and colors
- Easy assembly, installation and use

Chain



Motor



Components Material

All visible parts are available in ABS plastic as well as metal. ABS components are offered in six basic colors, while metal components are available in six different finishes, including Natural Aluminium.

For optimal user experience, the chain mechanism in the metal system is identical to that of the ABS plastic system and has been designed for smooth and reliable operation.

The Metal roller blind mechanism, combines a refined aluminium finish with durable metal components, making it ideal for medium-sized roller blind applications where performance and aesthetics are equally important.

Bracket and Profile Properties

	Bracket	Profile
Thickness	1,5 mm	1,5 mm
Material	Steel	EN - AW - 6060 - T5
Color	6 colors ABS 6 metallic colors	6 aluminum colors

Chain (transmission 1:1) Motor (wired or wireless)

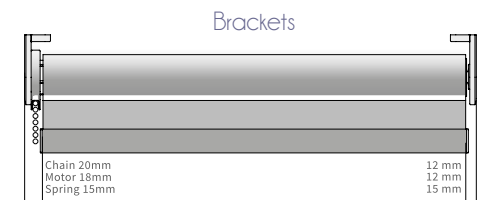


Small light gaps

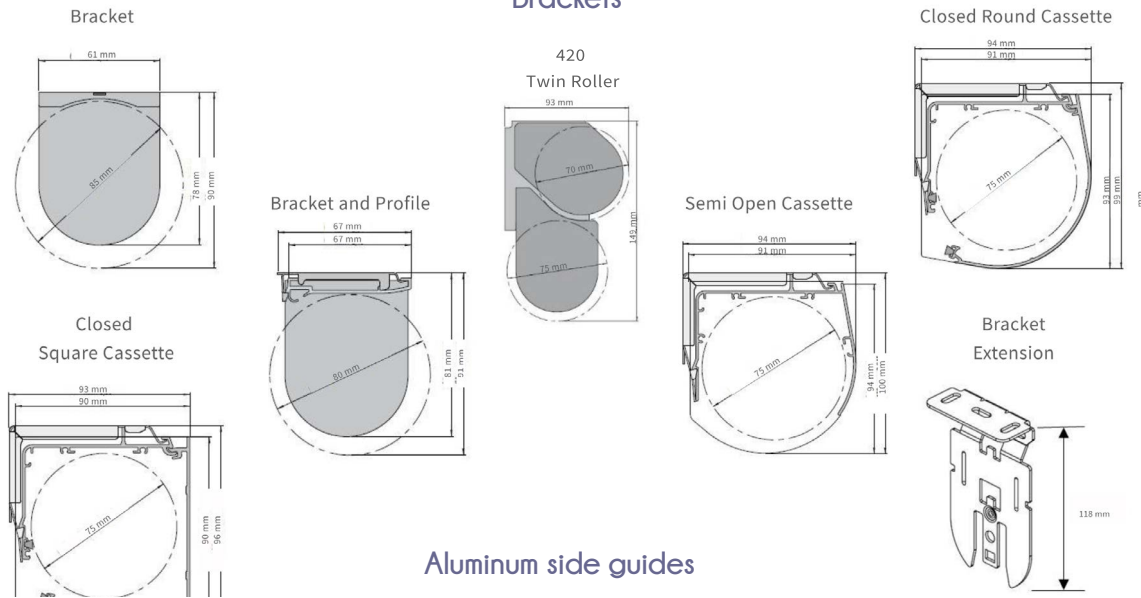
(fabric to outer brackets)

Tube

- Material: EN-AW-6060 T6 (Extruded aluminum)
- Finish: Mill



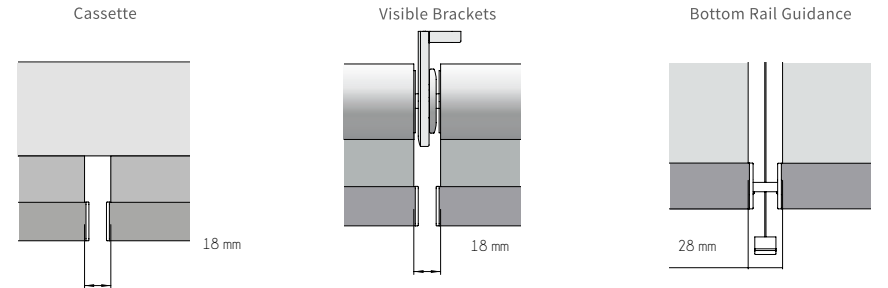
Planning Information Optima 420



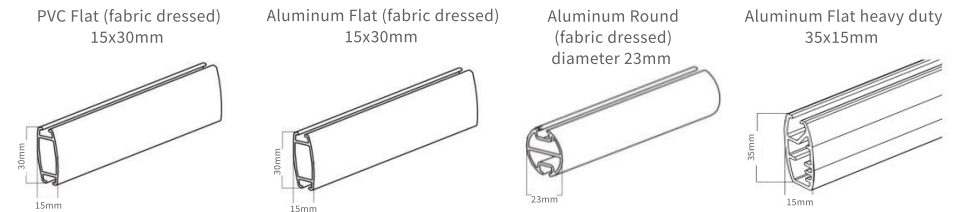
Planning Information Optima 420

Intermediate Options

(independent or simultaneous function of the connected rollers)



Bottom Rails



Maximum Dimensions

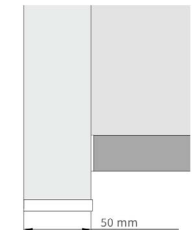
(Quick reference only, depending on type of fabric)

Maximum Width (m)	Maximum Height (m)	Maximum Surface (m ²)	Fabric
3	4,5	8,4	Plain
2,7	4,5	7,56	Blackout
2,65	4,5	7,42	Screen

PVC coated wire guide



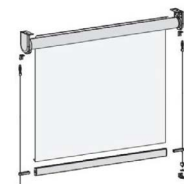
Fabric inside lateral guide

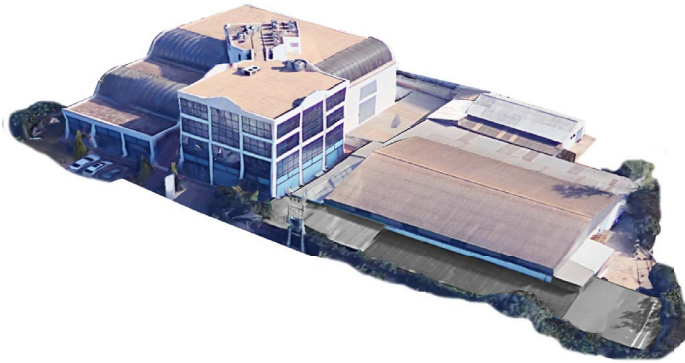


System of aluminum side guides



Wire guided system





Company Profile

Optima blinds are supplied exclusively by N. Assimakopoulos SA being the largest manufacturing company in natural light control system applications while exceeding 50 years of specialization and involving staff/partners of 40 people.

In privately owned facilities of 5,000 sq.m. in Elliniko the company sells its products with vertical organization that optimizes cost, quality and delivery time through:

- Import or domestic production of A & B materials.
- Processing and assembly using hydraulic/pneumatic forming machines for cutting/drilling aluminum sheets or profiles, laser/ultrasonic plotters and machine tools of own machine shop down to finished, aesthetically and functionally tested final systems.
- Study and project management by specialized engineers/designers and implementers of proven know-how who offer long lasting reliable solutions to special requirements.
- Installation by specialized crews trained and supervised by engineers with over 25 years of experience in the organization of construction sites and technical applications.
- After-sales support (maintenance, repair, spare parts).
- ISO 9001/14001 certified customer-order/environmental management procedures respectively.

Head Office - Factory:

2 Rizountos Str. & Thrakis Str. 16777,
Elliniko, Athens GR
(+30) 210 9600 960
(fax) 210 9607 429
info@assimakopoulos.gr

Optima Elements Voula:

58 Vouliagmenis Ave.,
16673, Greece
210 9680539,
210 9680739
voula@optimaelements.gr

Optima Elements Marousi:

Marousi - 139 Kifisias Ave.
& Marathonodromou,
15124, Greece
210 8054190, 210 8054580
marousi@optimaelements.gr